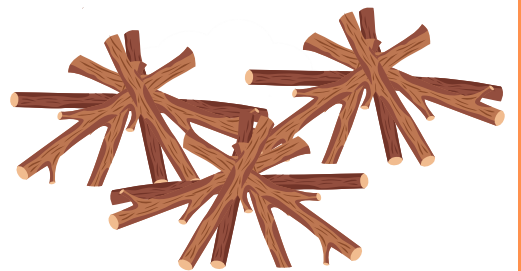
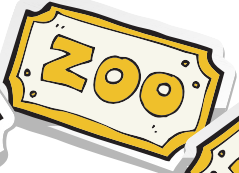
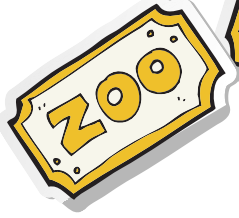
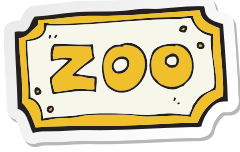
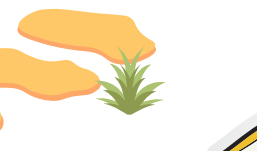


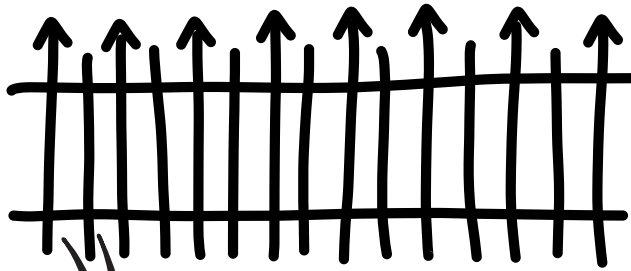
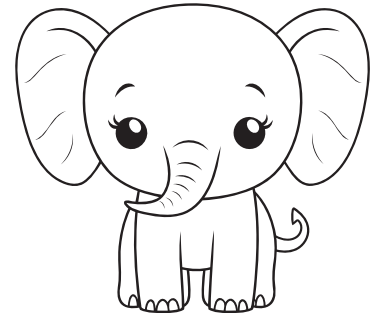
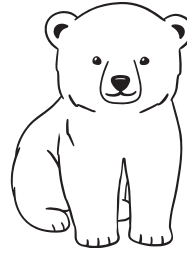
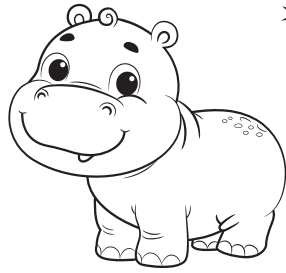
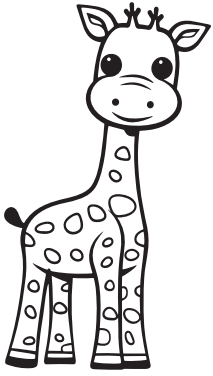
Ri

Räägi. Läbi rada.
Puuduta sõrmega
ja ütle: Ri



Värvi loomad, kes elavad loomaaias. Hiljem puuduta loomaaia loomi ja vii nad aedikusse.

Loom uriseb RI -RI.



KES VÕI MIS
KUULUB
LOOMAAEDA?
Värvi. Räägi, kes
või mis see on ja
miks sobib või ei
sobi.

